

Write the letter of the definition next to the number of the correct term.

J

1. Circle

D

2. Radius

M

3. Diameter

E

4. Interior Point

O

5. Exterior Point

K

6. Chord

A

7. Secant

P

8. Tangent

N

9. Concentric Circles

B

10. Congruent Circles

F

11. Inscribed Angle

Q

12. Semicircle

C

13. Minor Arc

L

14. Major Arc

R

15. Intercepted Arc

G

16. Central Angle

I

17. Inside Angle

H

18. Outside Angle

A. Any line that intersects a circle at two points

B. Circles with congruent radii.

C. An arc smaller than a semicircle

D. Any segment whose endpoints are the center and a point on the circle

E. A point inside a circle

F. Any angle whose vertex lies on the circle

G. Any angle whose vertex is the center of a circle

H. Any angle whose vertex is outside of a circle

I. Any angle whose vertex is inside of a circle

J. The set of points that are a given distance from a given point

K. Any segment whose endpoints are two points of a circle

L. An arc larger than a semicircle

M. A chord that contains the center of the circle

N. Circles with the same center

O. A point outside the circle

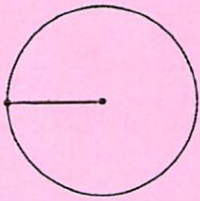
P. Any line in the plane of a circle that intersects the circle at one point

Q. Half a circle

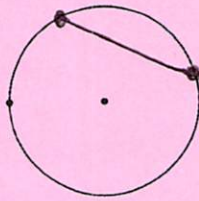
R. An arc formed by the sides of an angle

Vocabulary Pictures

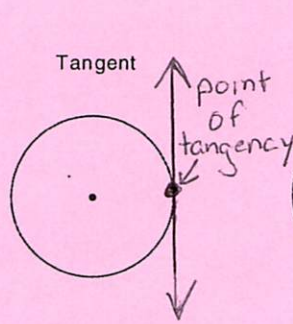
Radius



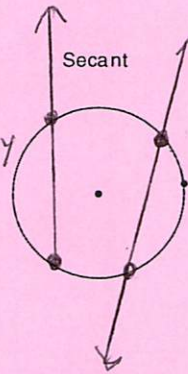
Chord



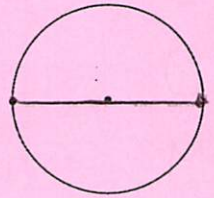
Tangent



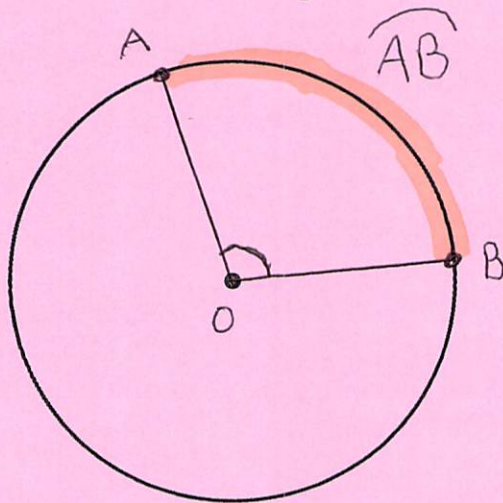
Secant



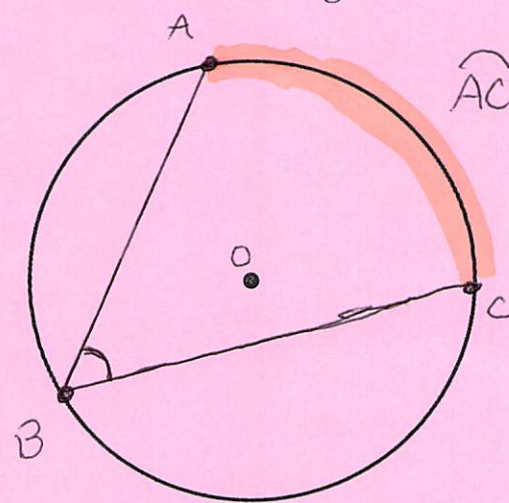
Diameter



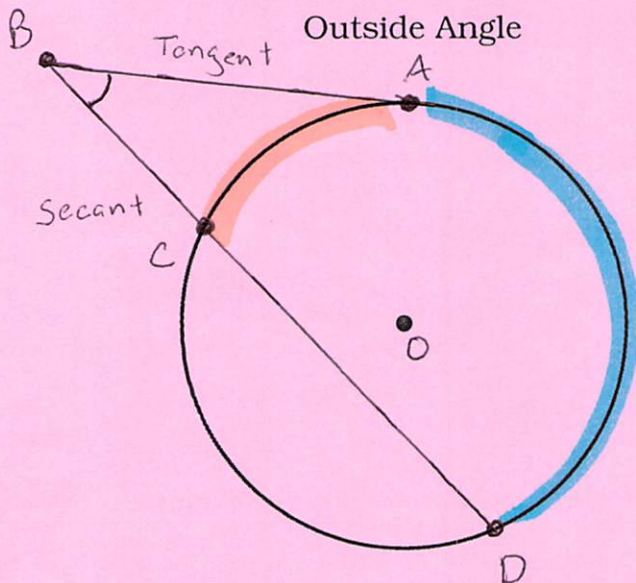
Central Angle



Inscribed Angle



Outside Angle



Inside Angle

