

Theater Makeup Guide

Dear Students, Parents and Guardians:

Your student will need a makeup kit for theater performances.

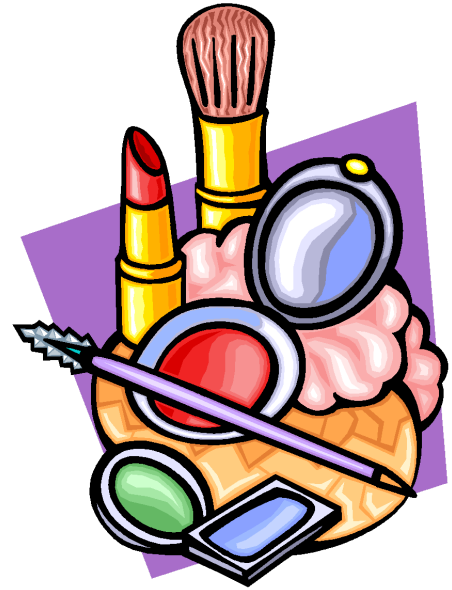
For health reasons, students may not share makeup.

All items should be clearly labeled with the student's name.

A kit with most of the makeup items can be purchased at Arlene's Costumes but Dollar store makeup is perfectly acceptable.

Here are some suggestions for inclusion in the makeup bag:

- A makeup or shave kit style bag or tackle box
- Foundation
- Blush
- Eye shadow (according to your character)
- Black/Brown Eye Liner (pencil not liquid)
- Mascara (Girls AND BOYS)
- Lipstick (according to your character)
- Deodorant (of course)
- Hairbrush / comb
- Bobby pins (in some sort of container and a color that matches your hair)
- Hair bands or elastics (try to match your hair)
- Hair Spray or gel
- Band Aids
- A big old shirt to cover your costume (PLEASE TRY TO KEEP MAKEUP OFF YOUR COSTUME)



Other useful items:

- Baby wipes/makeup remover wipes
- Tide pen
- Mirror
- Makeup remover pads
- Clear nail polish
- Small safety pins
- Spirit gum (if wearing a beard or moustache)
- Febreze clothing spray
- Cold Cream (foundation primer)
- Lotion (preferably unscented)
- Makeup brushes/sponges

Questions: Mrs Diana (sdiana@rhnet.org)