

Name: _____

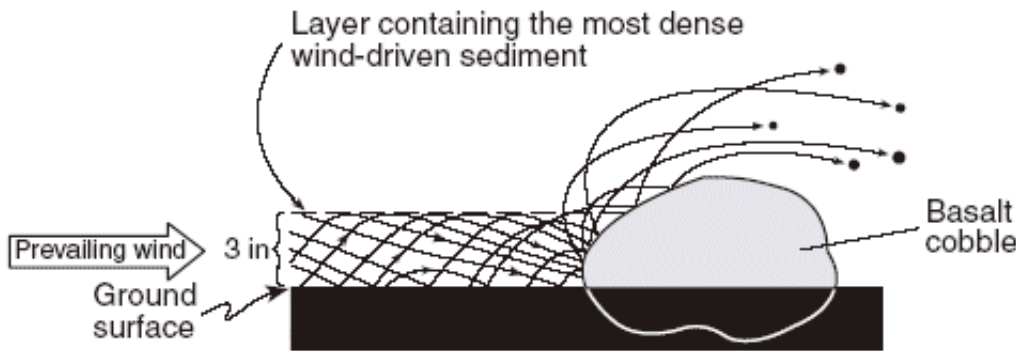
1.

A landslide is an example of

- | | |
|---------------------|------------------------|
| 1. river deposition | 3. mass movement |
| 2. glacial scouring | 4. chemical weathering |
-

2.

The cross section below shows the movement of wind-driven sand particles that strike a partly exposed basalt cobble located at the surface of a windy desert.



Which cross section best represents the appearance of this cobble after many years of exposure to the wind-driven sand?

1.



3.



2.

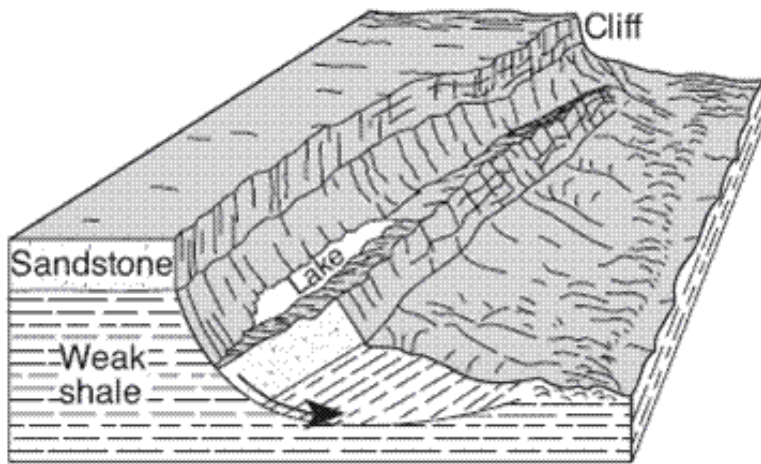


4.



3.

The block diagram below shows a displacement of rock layers.



Which process describes the downward sliding of the rock material?

- | | |
|--------------------|------------------|
| 1. tidal changes | 3. mass movement |
| 2. glacial erosion | 4. lava flow |

4.

The particles in a sand dune deposit are small and very well-sorted and have surface pits that give them a frosted appearance. This deposit most likely was transported by

- | | |
|-------------------|------------|
| 1. ocean currents | 3. gravity |
| 2. glacial ice | 4. wind |

5.

Which sediment is most easily picked up and transported by the wind?

- | | |
|------------|---------|
| 1. cobbles | 3. sand |
| 2. pebbles | 4. silt |

6.

The diagram represents a shoreline along which several general features have been labeled.

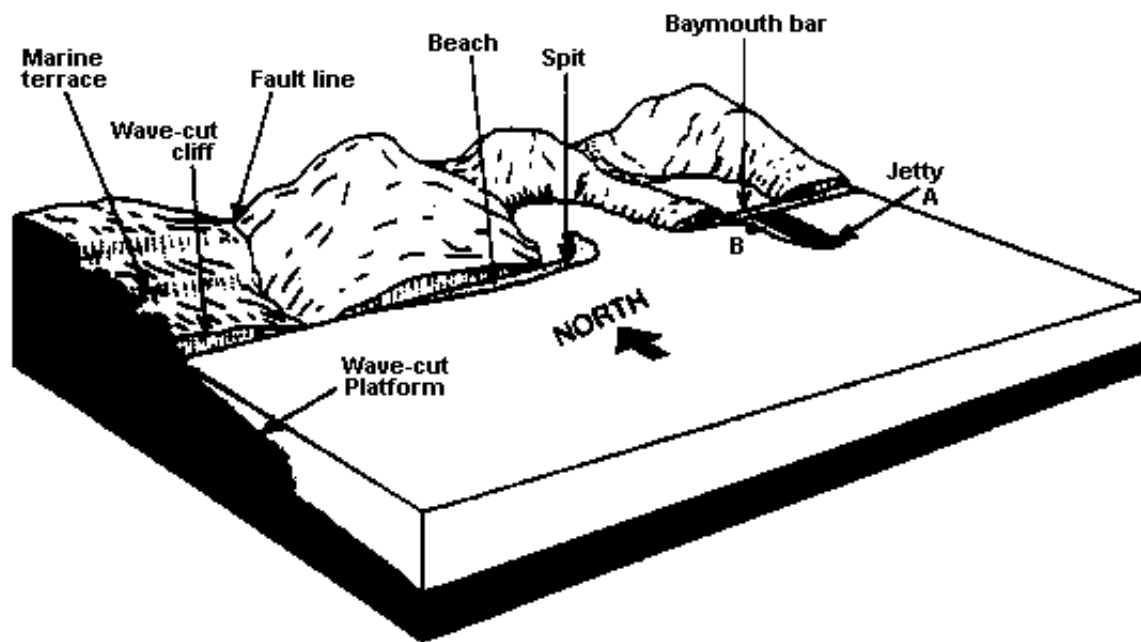


Figure 1

After the formation of the baymouth bar, the jetty (a structure of rocks that extends into the water) labeled *A* was constructed perpendicular to the shoreline. Which statement best describes the result of the construction of this jetty?

1. Water current velocity at location *B* decreased.
2. Water current velocity at location *B* increased.
3. Sand deposition at location *B* decreased.
4. Sand deposition was not affected.

.....

7.

[Refer to figure 1]

Which feature was formed because more erosion took place than deposition?

- | | |
|-------------------|-----------------|
| 1. spit | 3. baymouth bar |
| 2. wave-cut cliff | 4. beach |

.....

8.

[Refer to figure 1]

Which statement best describes the longshore current that is modifying this coastline?

1. The current is flowing northward at a right angle to the shoreline.
 2. The current is flowing southward at a right angle away from the shoreline.
 3. The current is flowing eastward parallel to the shoreline.
 4. The current is flowing westward parallel to the shoreline.
-

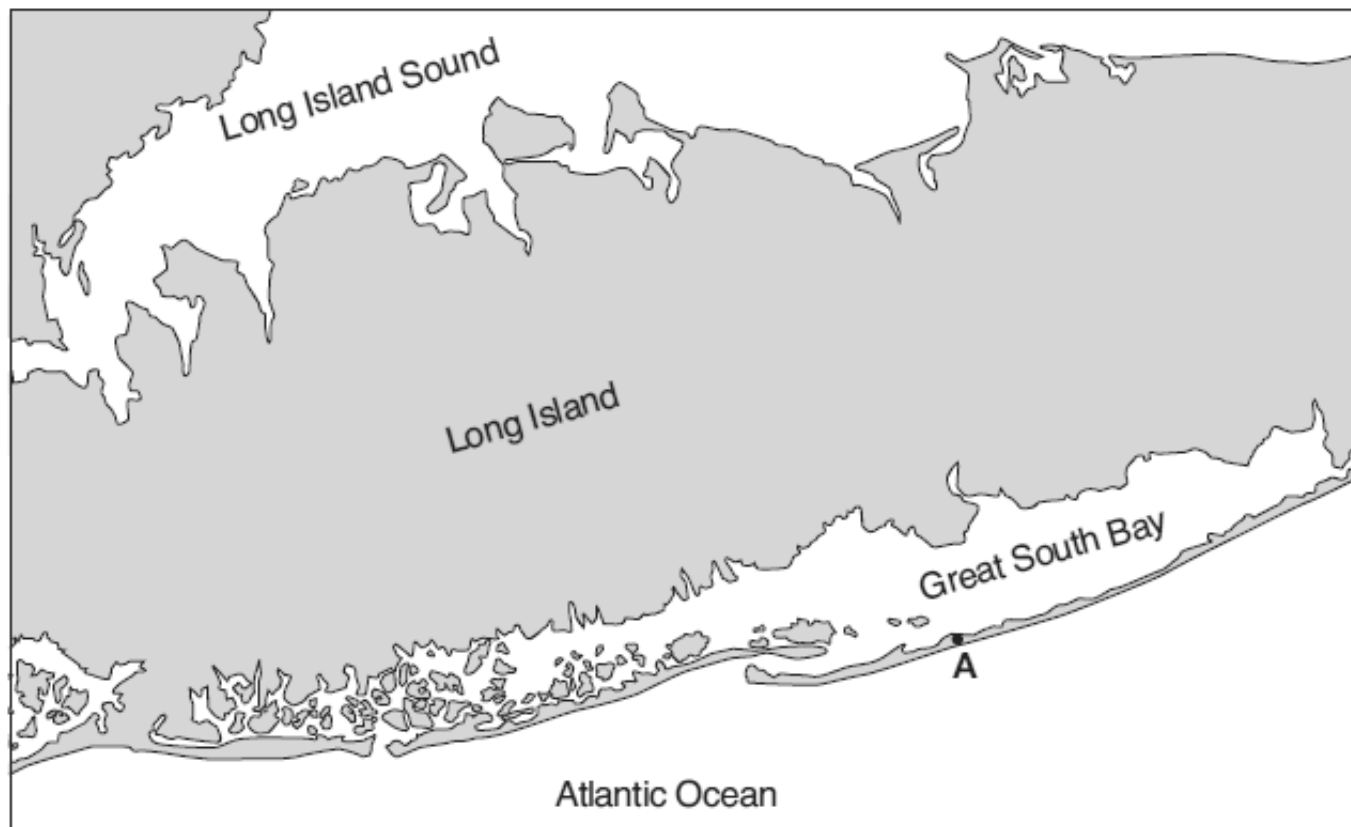
9.

Pieces of bedrock material that are broken from a cliff and deposited by a landslide at the base of the cliff are best described as

- | | |
|-------------------------|-------------------------|
| 1. rounded and sorted | 3. angular and sorted |
| 2. rounded and unsorted | 4. angular and unsorted |
-

10.

The map below shows coastal features of a portion of Long Island, New York. Point *A* represents a location on a landscape feature that resulted from wave action and longshore currents.



On which landscape feature is point *A* located?

- | | |
|------------|-------------------|
| 1. moraine | 3. barrier island |
| 2. delta | 4. floodplain |

.....

Answer Key for Review - Wind, Waves, Gravity

1.3	5.4	9.4
2.2	6.1	10.3
3.3	7.2	
4.4	8.3	